



SNOHOMISH COUNTY COUNCIL
 4312 Rucker Avenue
 Everett, Washington 98203-2233
 Telephone: 425 258 KIDS
 Fax: 425 252 CAMP
 E-mail: info@campfireusasnohomish.org
 www.campfireusasnohomish.org

CAPITAL CAMPAIGN NEWS

February 2009

INSIDE THIS EDITION

- Help Us Build Tye
- What's Left To Do?
- What Will Your Paver Say?

You're in the drivers seat.
 Now is your time to answer the call!



Cecil the Diesel on the Road to Success

CAMP FIRE DELIVERS CAPITAL CAMPAIGN

Celebrating Generations of Leadership — Past, Present,

Help Us Build Tye



In September of 2008, we received some magic! This magic came from the M. J. Murdock Charitable Trust in the form of a \$100,000 “Top-Off” Construction Challenge Grant.

Our donors have been responding. Our campaign has raised \$2,126,350. Add to that the \$100,000 “Top-Off” Challenge Grant, and we need to raise \$473,650 to complete our \$2.7 million capital campaign.

Our focus for the next 14 weeks is to raise \$196,000, so we can build Tye this year.

Even though the economy has people nervous, we're still about community service. We're still about reaching out and helping others. We're still about setting positive examples, so our Camp Fire kids will become “caring, confident youth and future leaders.” Now is the time to set your example and say “I Care!”

Put your caring into action by donating to our **CAMP FIRE DELIVERS Capital Campaign**. Every gift brings us closer to meeting the challenge and sets an important example for our children.

We need your help. **EVERY** donation of **EVERY** size is important.

You can mail a check to our office made out to Camp Fire USA Capital or use Pledge and Paver forms at **Join the Legacy** on our web site: www.CampFireUSASnohomish.org/capital.htm



CAMP FIRE DELIVERS Capital Campaign

**SNOHOMISH COUNTY COUNCIL
TRAINING & RESOURCE CENTER**
4312 Rucker Avenue
Everett, Washington 98203-2233
Telephone: 425 258 KIDS (5437)
Fax: 425 252 CAMP (2267)
E-Mail: info@campfireusasnohomish.org
www.campfireusasnohomish.org

CAMP KILLOQUA
Telephone & Fax: 360 652 6250
E-mail: killoqua@campfireusasnohomish.org
www.campfireusasnohomish.org/killoqua

BOARD OF DIRECTORS OFFICERS

Cindy Phillips, President
Cheri Ryan, Vice President
Dale Bonn, Treasurer
Fontelle Jones, Secretary

David Surface, Executive Director
Toby Brown, Capital Campaign Coordinator

CAMPAIGN STEERING CO-CHAIRS

Peter Baffaro – Fluke Corporation, Retired
Nancy Kniest – Stuchell Enterprises

HONORARY CO-CHAIRS

Mary Brannon, Retired
John Dickson, CEO Frontier Bank
Joni Earl, CEO Sound Transit
Carol Stuchell, Retired

**CAMPAIGN STEERING COMMITTEE
SUBCOMMITTEES**

Board Giving Task Force Committee
Leadership Gifts Committee
Major Gifts Committee
Community Gifts Committee

Donor Recognition Committee
Honorary Chairs Committee
Marketing & Public Relations Committee



MISSION STATEMENT: Camp Fire USA builds caring, confident youth and future leaders.

MOTTO: Give Service

What's Left To Do?

Meeting the Murdock \$100,000 "Top-Off" Challenge will allow us to...

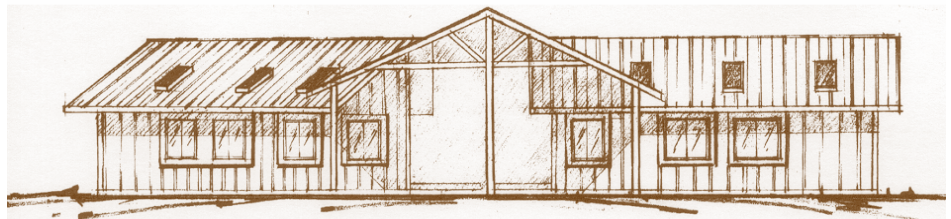
Build Tye Remodel three bathrooms at Camp Upgrade Heating & Electrical at Camp
Build Leadership Center Replace five roofs at Camp Replace Training & Resource Roof




The **Tye Building** will replace six platforms.

This new structure will serve 20 campers and their counselors every week and is designed to accommodate boys and girls at the same time. It will have a covered meeting and cookout area plus a deck.

*It will allow us to serve an additional
200 youth each year.*



What Will Your Paver Say?

TULALIP TRIBES		 DESIGNS northwest ARCHITECTS		HAVE FUN AT CAMP BRAD * KATHY * NILS * INGA	
HIGHLAND TRANSFER COMPANY, INC.					
To Breanna and Trina You're the light of my campfire WoHeLo! Mom	HASCALL FAMILY Andrew Lantz	DICK AND MARY BRANNON WO HE LO	BRENDA & ALYSSA J	JIM HATCH A LIFE DEVOTED TO HELPING CHILDREN	HALEY KNIEST CAMP FIRE GIRL 2006 AND BEYOND
GERTRUDE & ROLAND DIETMEIER CAMPERS EXTRAORDINAIRE			BARB JOHNSON	Harry & Carol Stuchell and Family	Jennifer Auchterlonie In Honor of Her Dad Charlie Auchterlonie
			JAMBA CERAR	SENDER FAMILY	LINDA KAYE AUCHTERLONIE
			MARY DURYEE MAUREN MARGARET MANDI	Pam & Tom Gebel	

Pavers come in six sizes. Donate now and be in our second order.

3" x 6" \$100 6" x 12" \$ 500 12" x 24" \$2,500
6" x 6" \$250 12" x 12" \$1,000 24" x 24" \$5,000

Join the Legacy on our web site: www.CampFireUSASnohomish.org/capital.htm